

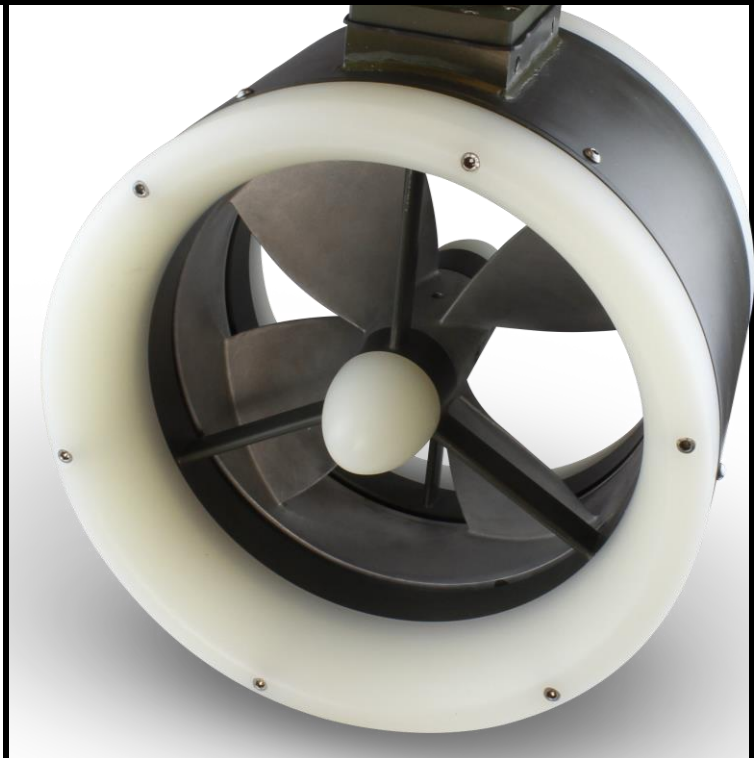
## 300mm Thruster

### Benefits

- Reliable
  - Sensorless control
  - Single rotating part
  - Single cable
  - Centre bearing
- Highly integrated
- Very compact
- No inherent depth limitation
- Quiet, efficient electric drive

### Performance

- 1000N @ 4kW continuous
- 150VDC supply
- Optimised for forward propulsion



This IntegratedThruster™ features a propeller design, optimised by state-of-the-art computational fluid dynamics to achieve high propulsive thrust with low power usage.

Quiet, electric rim drive is integrated into the duct of the thruster, making a compact single-rotating part low-maintenance design with no gearbox, coupling or space-consuming in-line motor.

Sensorless control means no need for hall effect or other shaft position sensors and only a single power cable, with a great improvement in reliability.

Our technology is designed with no inherent depth limitation, whether you want to propel a surface vehicle or visit the deepest depths of the ocean.

Our sensorless controllers are an ideal match.

<b>Ordering Information</b>	PA-THR-0042
-----------------------------	-------------

<b>Dimensions</b>	384mm external diameter x 291mm length. 25kg in air, 15kg in water. 300mm propeller diameter.
-------------------	---

**TSL Technology Ltd**  
 One Ropley Business Park, Ropley, Hampshire SO24 0BG, England  
 T: +44 (0)1962 772020, F: +44 (0)1962 772021, E: [enquiries@tsltechnology.com](mailto:enquiries@tsltechnology.com)  
[www.tsltechnology.com](http://www.tsltechnology.com)

TSL Technology Ltd reserves the right to change specifications at any time. Products sold in accordance with standard terms and conditions of sale.

© Copyright TSL Technology Ltd, 2016. All rights reserved.