

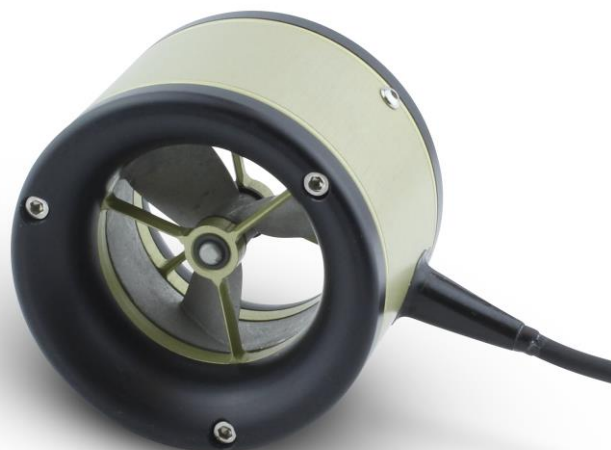
50mm Thruster

Benefits

- Reliable
 - Sensorless control
 - Single rotating part
 - Single cable
 - Centre bearing
- Highly integrated
- Very compact
- No inherent depth limitation
- Quiet, efficient electric drive

Performance

- 17N @ 100W continuous
- 28VDC supply
- Bi-directional - same high thrust in both directions



This IntegratedThruster™ features a propeller design, optimised by state-of-the-art computational fluid dynamics to achieve equal bi-directional high thrust with low power usage.

Quiet, electric rim drive is integrated into the duct of the thruster, making a compact single-rotating part low-maintenance design with no gearbox, coupling or space-consuming in-line motor.

Sensorless control means no need for hall effect or other shaft position sensors and only a single power cable, with a great improvement in reliability.

Our technology is designed with no inherent depth limitation, whether you want to propel a surface vehicle or visit the deepest depths of the ocean.

Our sensorless controllers are an ideal match.

Ordering Information PA-THR-0008

Dimensions 79mm external diameter x 57.9mm length.
 0.45kg in air, 0.25kg in water.
 50mm propeller diameter.

TSL Technology Ltd

One Ropley Business Park, Ropley, Hampshire SO24 0BG, England

T: +44 (0)1962 772020, F: +44 (0)1962 772021, E: enquiries@tsltechnology.com

www.tsltechnology.com

TSL Technology Ltd reserves the right to change specifications at any time. Products sold in accordance with standard terms and conditions of sale.

© Copyright TSL Technology Ltd, 2016. All rights reserved.